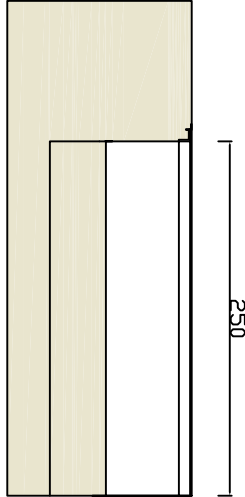
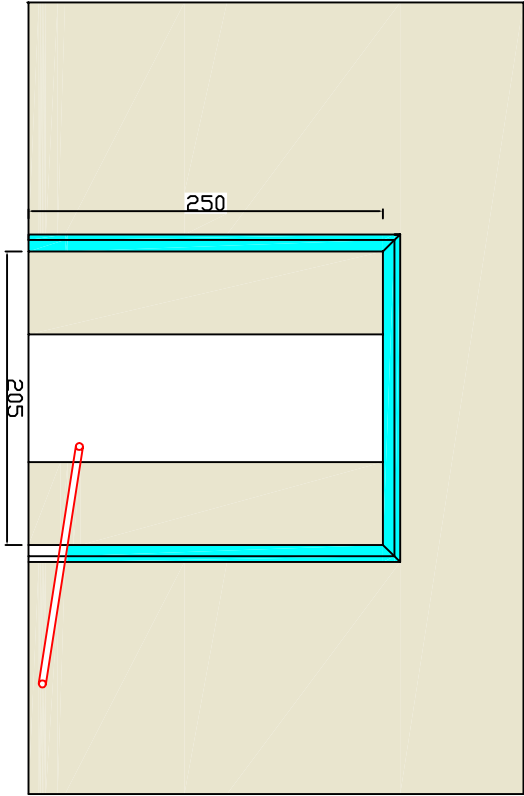


Front View

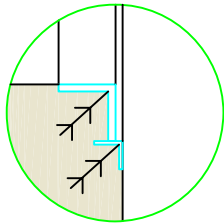


Profile View



Up View

Angle Fixing Detail



Pipe is necessary for the connection hydraulic unit to control panel. Please put a guide cable in the pipe.

Power supply line must be provided to control unit for three phase 1,1 kW asynchronous motor. For example: 4x2,5 mm² three phase power line is enough for 30 meters distance power source to control unit of dock leveller.

HINGED LIP DOCK LEVELLER PIT DETAIL 200X250

Drawn	Ibrahim EVREN	Scale	1/1
Date	07.11.2009	Unit	cm
Control	Ali Başar GÜLEÇ		
Submit	M. Mustafa KASAPOĞLU		